



**MOUNTAINLAND**  
TECHNICAL COLLEGE

---

**A Proposal for Heber Valley**

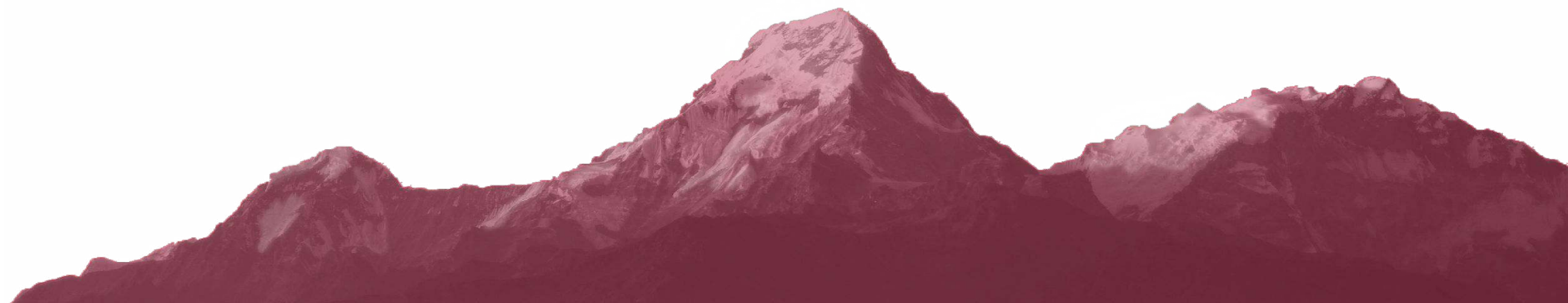
**Clay Christensen, President**  
**Fall 2022**

---

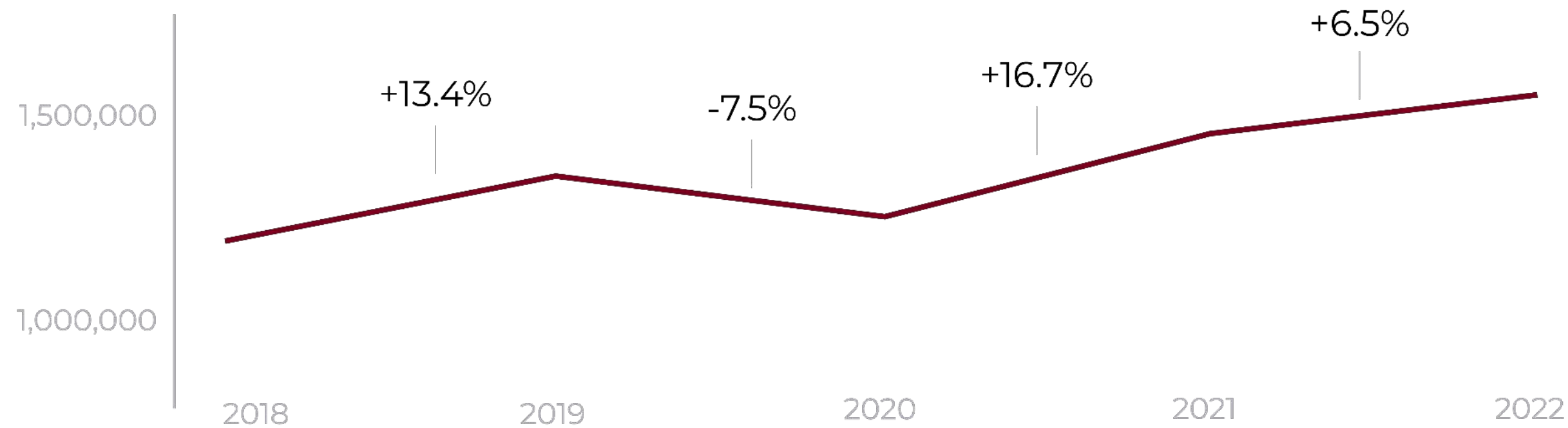
# THE CHARGE

*To prepare the workforce in the three county service region and implement the Mission Statement of the Mountainland Technical College through the five core areas of: Program Development; Student Achievement; Faculty and Staff Support; Physical Resources; and Community Outreach.*

*- Mountainland Technical College, Official Vision Statement*



# MTECH ENROLLMENT GROWTH



## TOTAL MEMBERSHIP HOURS:

2019: 1,338,093

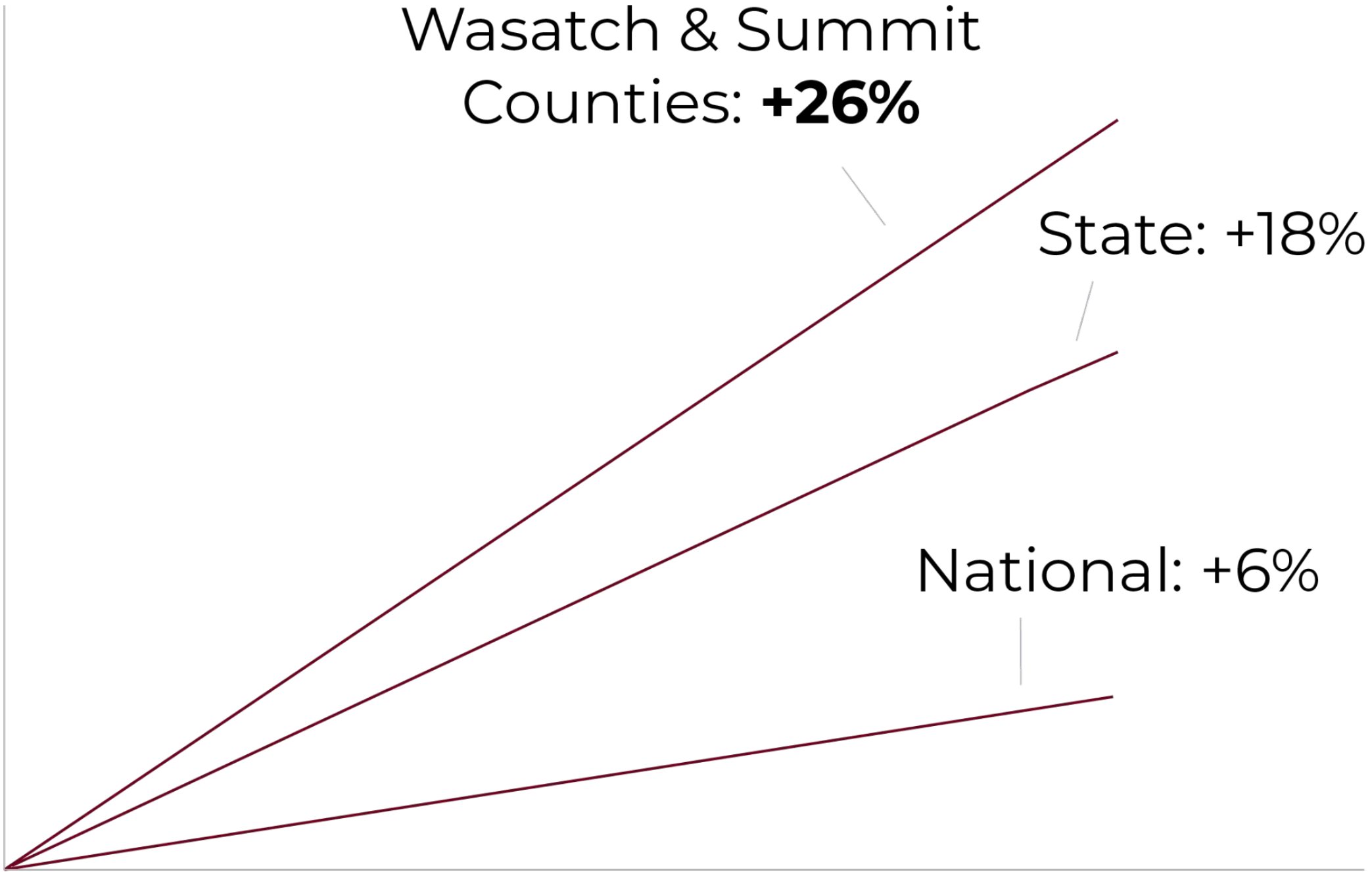
2020: 1,246,774

2021: 1,454,420

**2022: 1,548,651**

Membership hours have grown by **36.09%** (473,711) since 2016.

# WASATCH & SUMMIT ARE GROWING



Projected 10 Year Population Growth



# WASATCH-SUMMIT WORKFORCE NEEDS

**4,905 Wasatch-Area Jobs Currently Unfilled in MTECH Program Areas\***

*“Over the next 5 years, employment in the Wasatch-Summit region is projected to expand by 4,897 jobs”\**

	Wasatch: 10-Year Growth	Summit: 10-year growth
<b>Information Technology</b>	39.2%	17.2%
<b>Health Services</b>	44.7%	19.8%
<b>Manufacturing</b>	33.5%	5.1%
<b>Transportation</b>	45.8%	22.9%
<b>Culinary &amp; Accommodation</b>	54.0%	30.8%
<b>Construction</b>	34.9%	9.1%



\* Sources: July 2022:  
JobsEQ: <http://www.chmuraecon.com/jobseq>

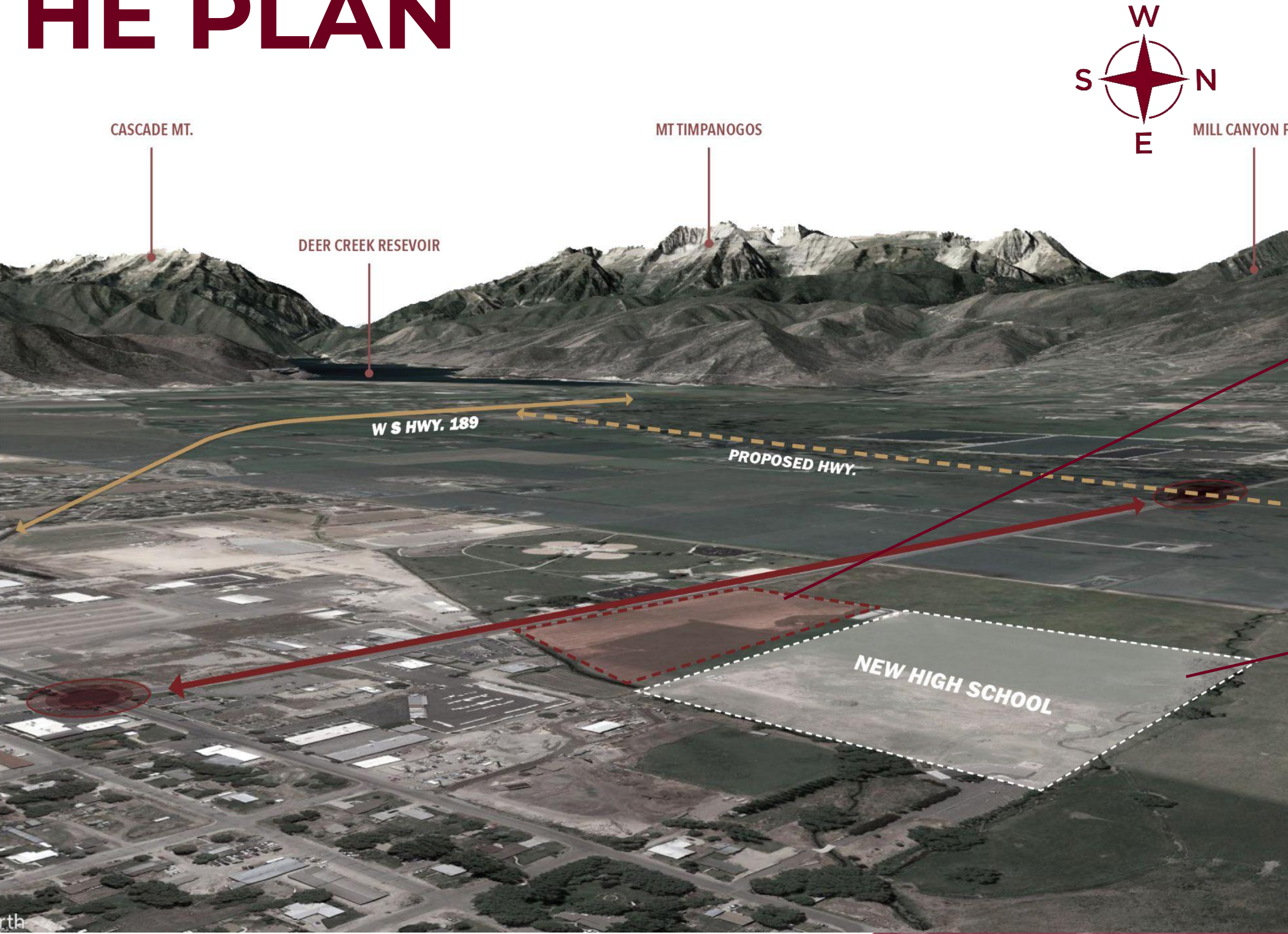
# **MOUNTAINLAND TECHNICAL COLLEGE**

## **HEBER VALLEY**

---



# THE PLAN



**MTECH FACILITY  
10.75 ACRES**

*Located at approximately  
100 S & 900 W*

**NEW HIGH SCHOOL**

# MTECH- WASATCH

---



- > **675 students ready to go in first cohort**
- > **Comprehensive Campus:**
  - Technology
  - Trades
  - Healthcare
  - Service
  - Apprenticeship
- > **\$129 M into the Utah economy- every year**



# ECONOMIC IMPACT OF MTECH GRADUATES

2022 Wasatch/Summit Graduates:	302
Annual Economic Impact:	\$57,716,000
Projected Graduates, Year One:	675
Projected Annual Impact:	\$129,000,000





# MOUNTAINLAND TECHNICAL COLLEGE

