



MOUNTAINLAND
TECHNICAL COLLEGE

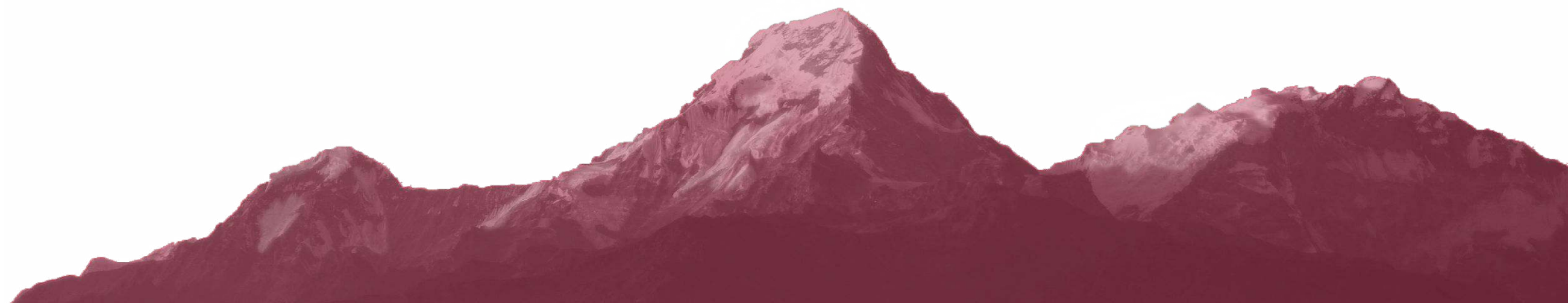
A Proposal for Heber Valley

Clay Christensen, President
Fall 2022

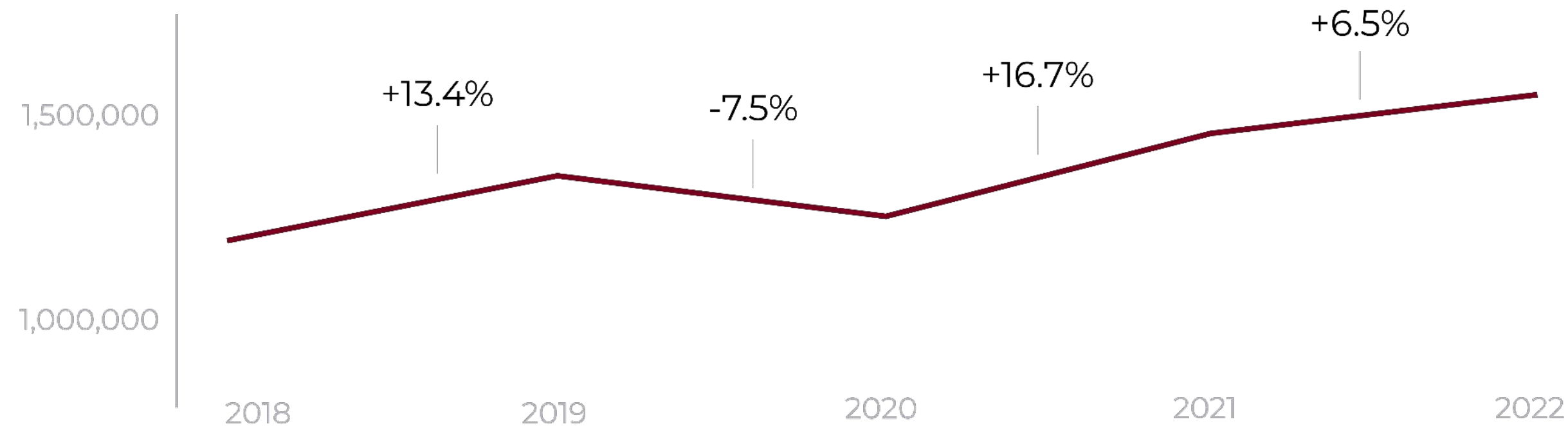
THE CHARGE

To prepare the workforce in the three county service region and implement the Mission Statement of the Mountainland Technical College through the five core areas of: Program Development; Student Achievement; Faculty and Staff Support; Physical Resources; and Community Outreach.

- Mountainland Technical College, Official Vision Statement



MTECH ENROLLMENT GROWTH



TOTAL MEMBERSHIP HOURS:

2019: 1,338,093

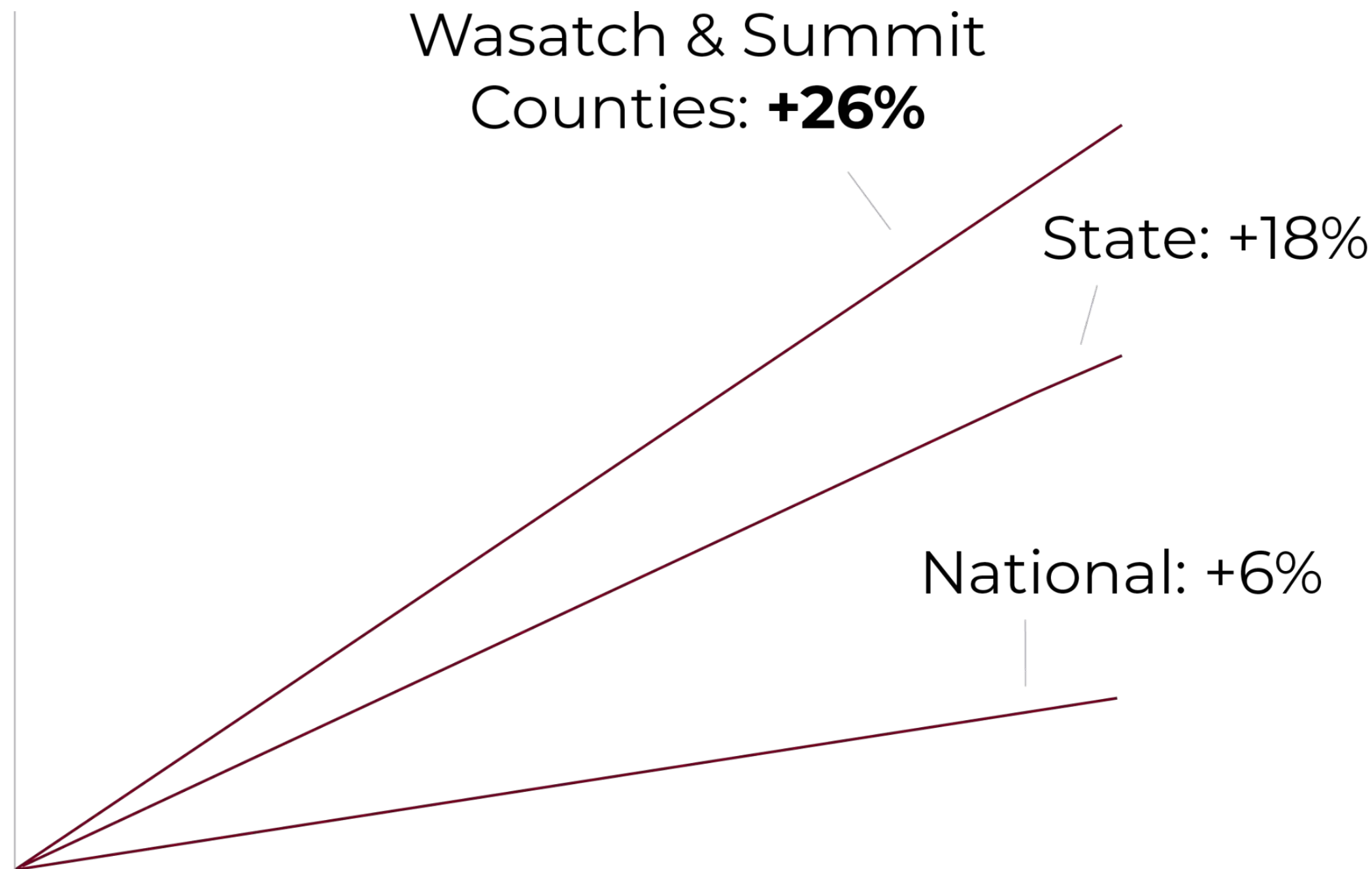
2020: 1,246,774

2021: 1,454,420

2022: 1,548,651

Membership hours have grown by
36.09% (473,711) since 2016.

WASATCH & SUMMIT ARE GROWING



Projected 10 Year Population Growth



WASATCH-SUMMIT WORKFORCE NEEDS

4,905 Wasatch-Area Jobs Currently Unfilled in MTECH Program Areas*

*“Over the next 5 years, employment in the Wasatch-Summit region is projected to expand by 4,897 jobs”**

	Wasatch: 10-Year Growth	Summit: 10-year growth
Information Technology	39.2%	17.2%
Health Services	44.7%	19.8%
Manufacturing	33.5%	5.1%
Transportation	45.8%	22.9%
Culinary & Accommodation	54.0%	30.8%
Construction	34.9%	9.1%



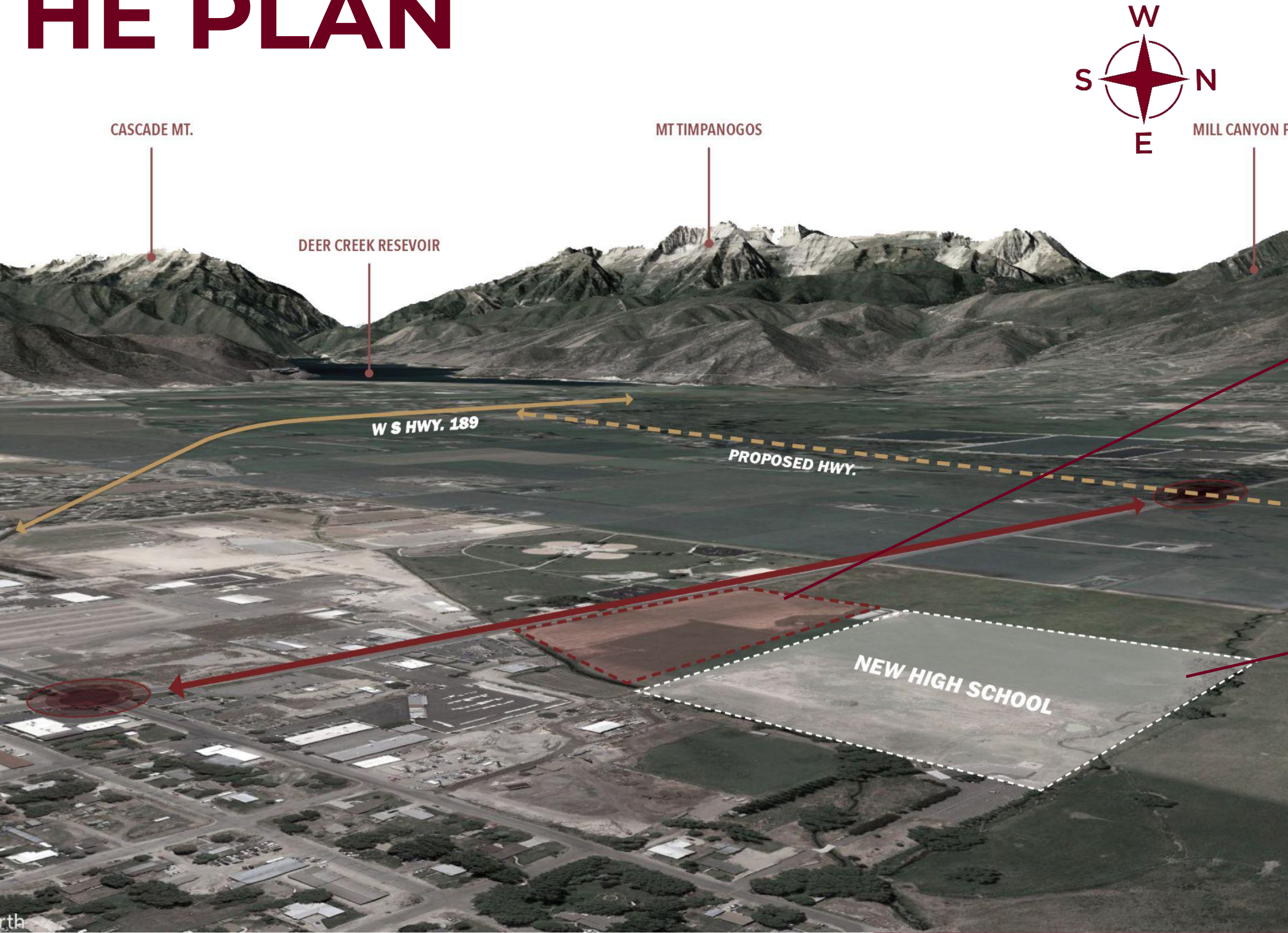
** Sources: July 2022:
JobsEQ: <http://www.chmuraecon.com/jobseq>*

MOUNTAINLAND TECHNICAL COLLEGE

HEBER VALLEY



THE PLAN



**MTECH FACILITY
10.75 ACRES**

*Located at approximately
100 S & 900 W*

NEW HIGH SCHOOL

MTECH- WASATCH



- > **675 students ready to go in first cohort**
- > **Comprehensive Campus:**
 - Technology
 - Trades
 - Healthcare
 - Service
 - Apprenticeship
- > **\$129 M into the Utah economy- every year**

ECONOMIC IMPACT OF MTECH GRADUATES

2022 Wasatch/Summit Graduates:	302
Annual Economic Impact:	\$57,716,000
Projected Graduates, Year One:	675
Projected Annual Impact:	\$129,000,000





MOUNTAINLAND TECHNICAL COLLEGE